

5 year/5,000 hour Control Rod Inspection

Chapter 5-10-00

**Aviation Services Unlimited, Inc.
Hgr #6, Wiley Post Airport
Bethany, OK 73008
C.R.S. #X6UR264N**

SWO/Bey 1 3/26/08

Aileron Rods



0024 WESTWIND / MAINTENANCE
ISRAEL AIRCRAFT INDUSTRIES LTD / MANUAL

| <u>SYSTEM AND COMPONENT</u> | <u>PART NUMBER</u> | <u>OVERHAUL OR REPLACE</u> | <u>REPLACE</u> |
|--------------------------------------|---------------------------------|------------------------------------|----------------|
| (g) Flexible Shaft Inboard Left | 193545-501 | | 10,000 |
| (h) Flexible Shaft Inboard Right | 193545-505 | | 10,000 |
| (i) Access Control System | | | |
| (a) Rod Assembly | 513020-501 | X-Ray Insp. (See Note) | |
| (b) Rod Assembly | 513506-503, -503RD or -503RE | X-Ray Insp. (See Note) | |
| (c) Tube | 513512-3 | X-Ray Insp. (See Note) | |

NOTE: (1) 10 years or 10,000 hours, whichever occurs first, and each 5 years or 5000 hours, whichever occurs first, thereafter - perform X-Ray inspection in accordance with Non-Destructive Testing Manual.

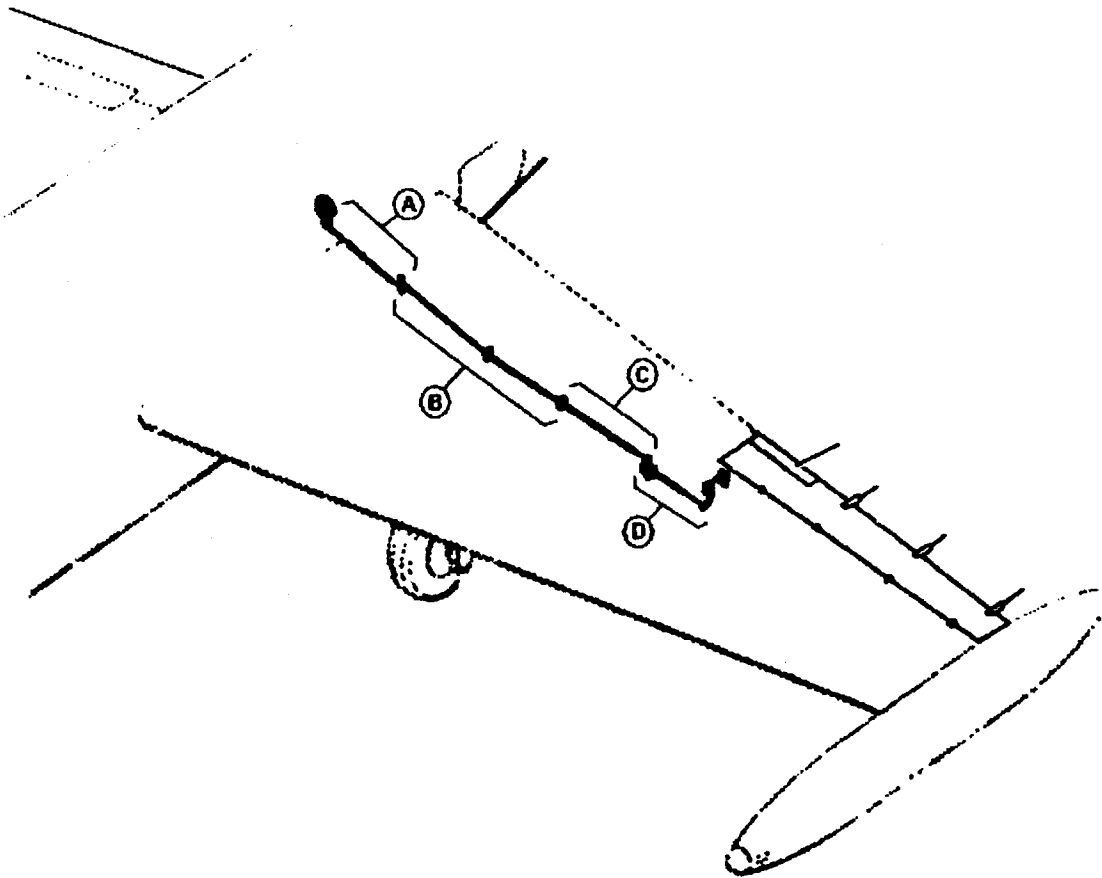
(2) For rod assemblies with greater than 9 years or greater than 9000 hours on March 1, 1996, inspection is due 1 year or 1000 hours, whichever occurs first, from March 1, 1996.

(3) When Rod Assembly 513506-503RE / -503RD are replaced by Tube Assembly 513506-505 (stainless steel), the X-Ray requirement has been eliminated.

EFFECTIVITY: ALL

5-10-00

Page 203
Jan 31/2006

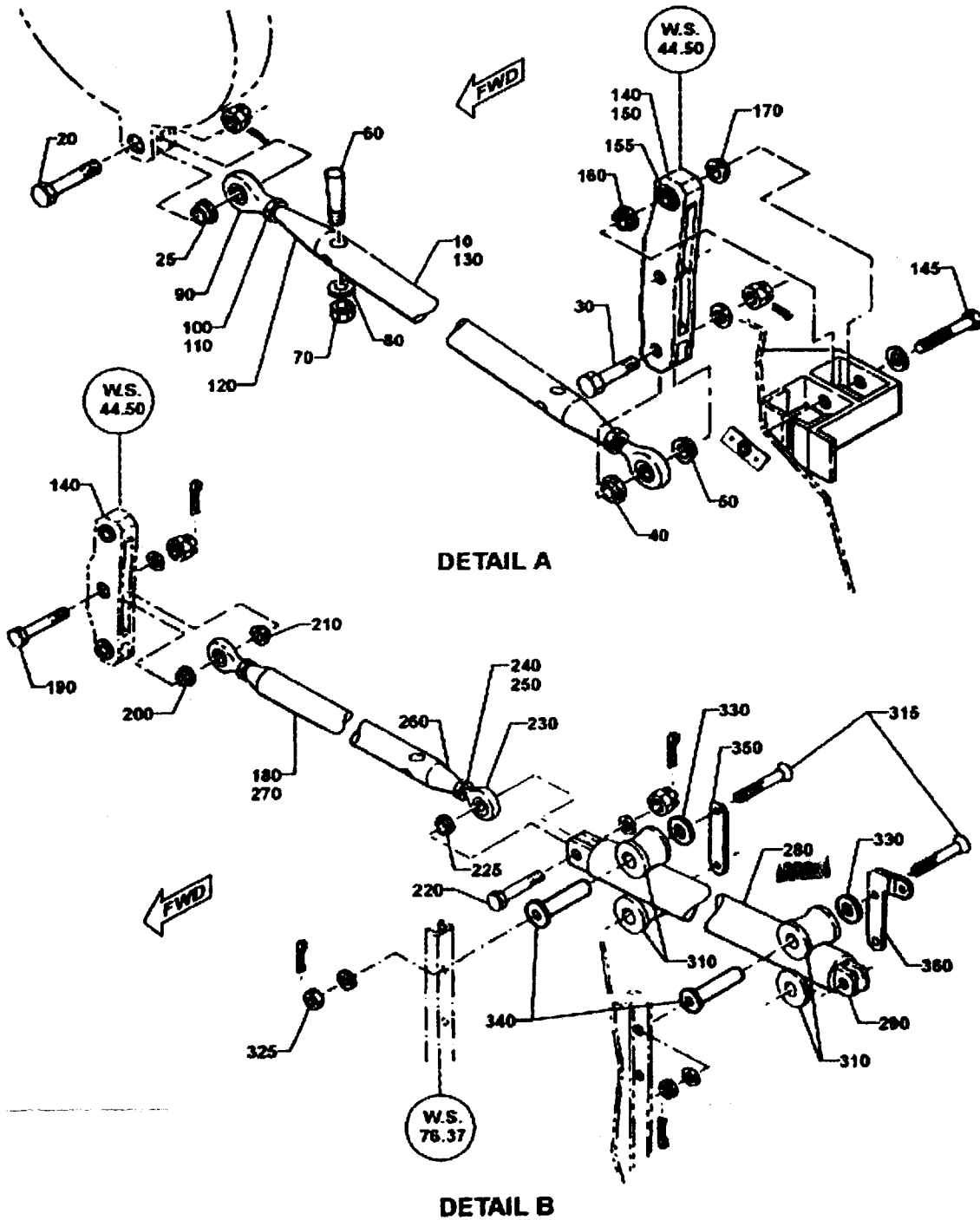


Aileron Control Installation - Wing
Figure 4
(Sheet 1)

EFFECTIVITY: ALL

27-10-00

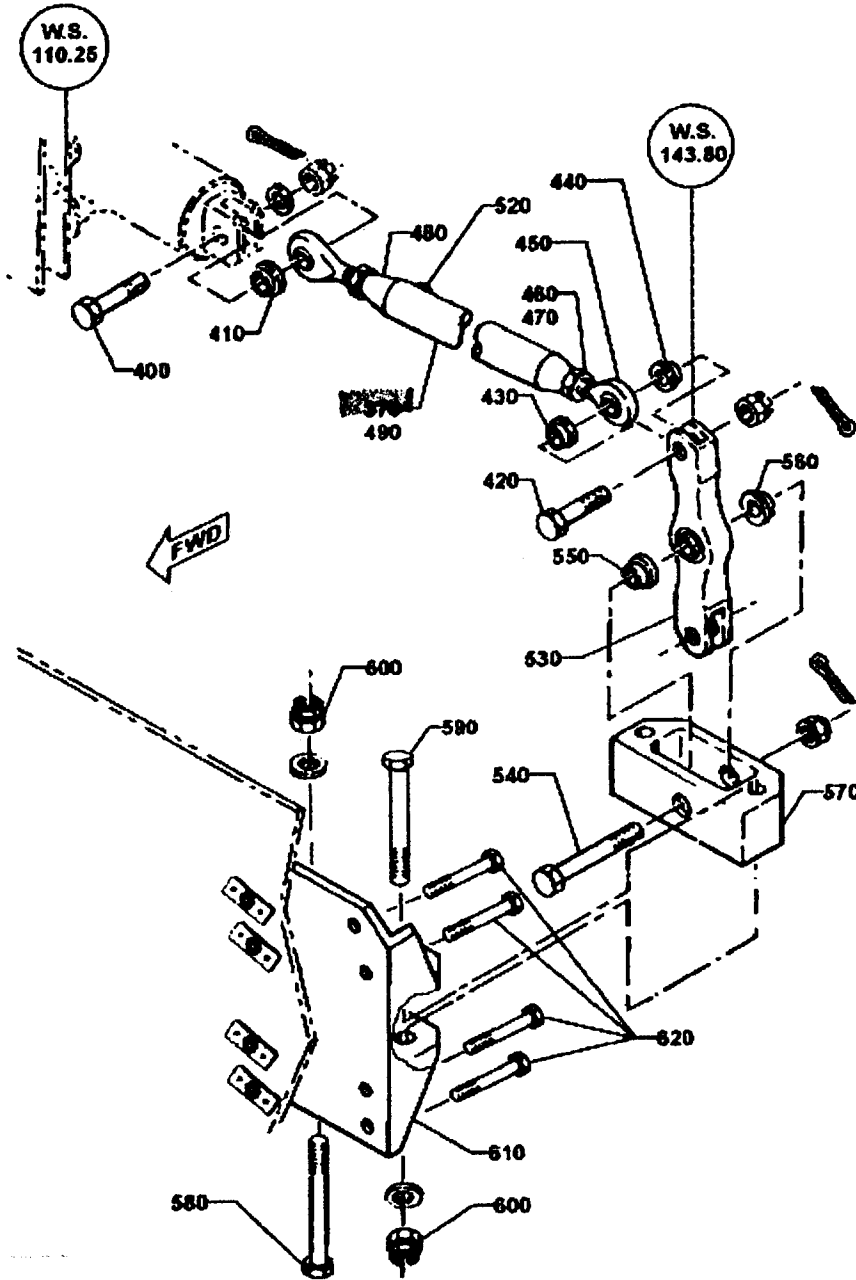
Fig. 4
Page 0
Jul 31/2005



Aileron Control Installation - Wing
 Figure 4
 (Sheet 2)

EFFECTIVITY: ALL

27-10-00



DETAIL C

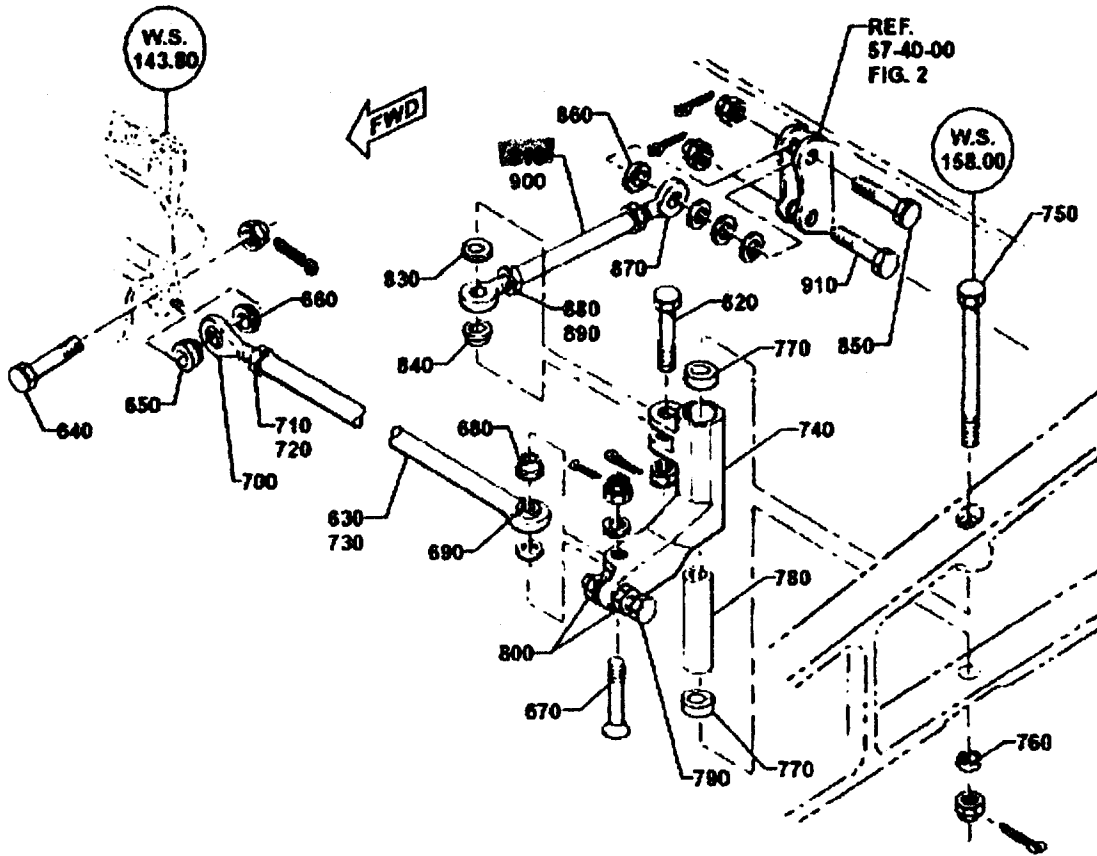
Aileron Control Installation - Wing

Figure 4
 (Sheet 3)

EFFECTIVITY: ALL

27-10-00

Fig. 4
 Page 2
 Jul 31/2005



DETAIL D

Alleron Control Installation - Wing
 Figure 4
 (Sheet 4)

EFFECTIVITY: ALL

27-10-00

Fig. 4
 Page 3
 Jul 31/2005

| FIGURE & ITEM NO. | PART NUMBER | NOMENCLATURE | AIRCRAFT EFFECTIVITY CODE | UNITS PER ASSY |
|--------------------|-------------|---------------------------------|---------------------------|----------------|
| | | 1234567 | | |
| 4 - | AN960-416 | .WASHER | | 1 |
| | MA17826-4 | .NUT | | 1 |
| | MS24665-134 | .COTTER PIN | | 1 |
| 225 | NAS75-5-009 | .BUSHING | | 1 |
| | | * * * | | |
| 230 | ST4BW | . ROD END (V02909) | | 2 |
| | 60-1832 | . ROD END (ALT) (VD3279) | | 2 |
| | SM4-6M5 | . ROD END (ALT) (V77896) | | 2 |
| 240 | NAS509-6 | . NUT | | 2 |
| 250 | NAS559-2 | . LOCK, ROD END | | 2 |
| 260 | 5003513-503 | . FITTING | | 2 |
| 270 | 513505-3 | . TUBE | | 1 |
| 280 | 513512-1 | . ROD ASSY | | 1 |
| 290 | 513026-501 | . FITTING | | 2 |
| 290 300 | 513512-3 | . TUBE | | 1 |
| 310 | 513025-501 | .GUIDE ROLLER | | 4 |
| | | ATTACHING PARTS | | |
| 315 | 513501-13 | .SCREW (SUPERSEDED BY ITEM 320) | | 1 |
| - 320 | 513501-15 | .SCREW (SUPERSEDES ITEM 315) | | 1 |
| 325 | 513501-7 | .WASHER | | 1 |
| | MS17826-3 | .NUT | | 1 |
| | MS24665-71 | .COTTER PIN | | 1 |
| 330 | AN960-616L | .WASHER | | 1 |
| 340 | 513501-11 | .BUSHING | | 1 |
| 350 | 513514-503 | .STRAP | | 1 |

- ITEM NOT ILLUSTRATED

EFFECTIVITY: ALL

27-10-00

Fig. 4
Page 6
Jul 31/2005

| FIGURE & ITEM NO. | PART NUMBER | NOMENCLATURE | AIRCRAFT EFFECTIVITY CODE | UNITS PER ASSY |
|-------------------|--------------|--|---------------------------|----------------|
| | | 1234567 | | |
| 4 - 380 | 513514-507 | .STRAP, LH | | 1 |
| | 513514-508 | .STRAP, RH | | 1 |
| | | *** | | |
| | 513506-503 | .ROD ASSY (SUPERSEDED BY ITEM 380) | | 1 |
| | 513506-503RD | .ROD ASSY (SUPERSEDES ITEM 370 & IS SUPERSEDED BY ITEM 390) | | 1 |
| | 513506-503RE | .ROD ASSY (SUPERSEDES ITEM 370 AND 380) | | 1 |
| | 513506-505 | .ROD ASSY (SUPERSEDES ITEMS 370, 380 AND 390) (REF. SB 1123-27-057 FOR MODEL 1123) (REF. SB 1124-27-144 FOR MODEL 1124) | | |
| | | ATTACHING PARTS | | |
| 400 | NAS464P4-16 | .BOLT | | 1 |
| | NAS6204-16D | .BOLT (ALT) | | 1 |
| | AN960-416 | .WASHER | | 1 |
| | MS17826-4 | .NUT | | 1 |
| | MS24665-134 | .COTTER PIN | | 1 |
| 410 | NAS75-4-009 | .BUSHING | | 1 |
| 420 | NAS464P4-14 | .BOLT | | 1 |
| | NAS6204-14D | .BOLT (ALT) | | 1 |
| | MS17826-4 | .NUT | | 1 |
| | MS24665-134 | .COTTER PIN | | 1 |
| 430 | NAS75-4-022 | .BUSHING | | 1 |
| 440 | NAS77-4-10 | .BUSHING | | 1 |
| | | *** | | |
| 450 | ST4BW | .ROD END (V02909) | | 2 |

- ITEM NOT ILLUSTRATED

EFFECTIVITY: ALL

27-10-00

Fig. 4
Page 7
Jul 31/2005

| FIGURE & ITEM NO. | PART NUMBER | NOMENCLATURE | AIRCRAFT EFFECTIVITY CODE | UNITS PER ASSY |
|-------------------|--------------|--------------------------|---------------------------|----------------|
| | | 1234567 | | |
| 4 - 700 | ST4BW | . ROD END (V02909) | | 1 |
| | 60-1832 | . ROD END (ALT) (VD3279) | | 1 |
| | SM4-6M5 | . ROD END (ALT) (V77896) | | 1 |
| 710 | NAS509-6 | . NUT | | 1 |
| 720 | NAS559-2 | . LOCK, ROD END | | 1 |
| 730 | 513510-3 | . ROD | | 1 |
| 740 | 513511-1 | . BELLCRANK, LH | | 1 |
| | 513511-2 | . BELLCRANK, RH | | 1 |
| | | ATTACHING PARTS | | |
| 750 | NAS464P5-68 | . BOLT | | 1 |
| | NAS6205-68D | . BOLT (ALT) | | 1 |
| | MS17826-5 | . NUT | | 1 |
| | MS24665-134 | . COTTER PIN | | 1 |
| 760 | NAS75-5-009 | . BUSHING | | 1 |
| | | * * * | | |
| 770 | MA276441KP5A | . BEARING | | 2 |
| | MS20201KP5A | . BEARING (ALT) | | 2 |
| 780 | NAS75-5-302 | . BUSHING | | 1 |
| 790 | NAS428H4-13 | . BOLT | | 1 |
| 800 | NAS509-4 | . NUT | | 2 |
| 810 | 513020-501 | . ROD ASSY | | 1 |
| | | ATTACHING PARTS | | |
| 820 | NAS464P5-17 | . BOLT | | 1 |
| | NAS6204-17D | . BOLT (ALT) | | 1 |
| | MA17826-5 | . NUT | | 1 |
| | MS24665-134 | . COTTER PIN | | 1 |

- ITEM NOT ILLUSTRATED

EFFECTIVITY: ALL

27-10-00

Fig. 4
Page 10
Jul 31/2005

Rudder Rods

| <u>SYSTEM AND COMPONENT</u> | <u>PART NUMBER</u> | <u>OVERHAUL OR REPLACE</u> | <u>REPLACE</u> |
|-----------------------------|--------------------|----------------------------|----------------|
|-----------------------------|--------------------|----------------------------|----------------|

(3) Rudder Control System

| | | | |
|--|------------------|------------------------|--|
| (a) Rod Assembly (Brake Pedal) | 3900009-23-13.18 | X-Ray Insp. (See Note) | |
| (b) Rod Assembly (Brake Pedal Interconnect) | 3900009-23-8.38 | X-Ray Insp. (See Note) | |
| (c) Shaft (Rudder Pedal Support) | 533114-501 | X-Ray Insp. (See Note) | |

NOTE: (1) 10 years or 10,000 hours, whichever occurs first, and each 5 years or 5000 hours, whichever occurs first, thereafter - perform X-Ray inspection in accordance with Non-Destructive Testing Manual.

(2) For rod assemblies with greater than 9 years or greater than 9000 hours on March 1, 1996, inspection is due 1 year or 1000 hours, whichever occurs first, from March 1, 1996.

(4) Elevator Control System

| | | | |
|------------------------------------|-----------|------------------------------|--|
| Tube (Elevator Bellcrank Assembly) | 533012-13 | Visual Inspection (See Note) | |
|------------------------------------|-----------|------------------------------|--|

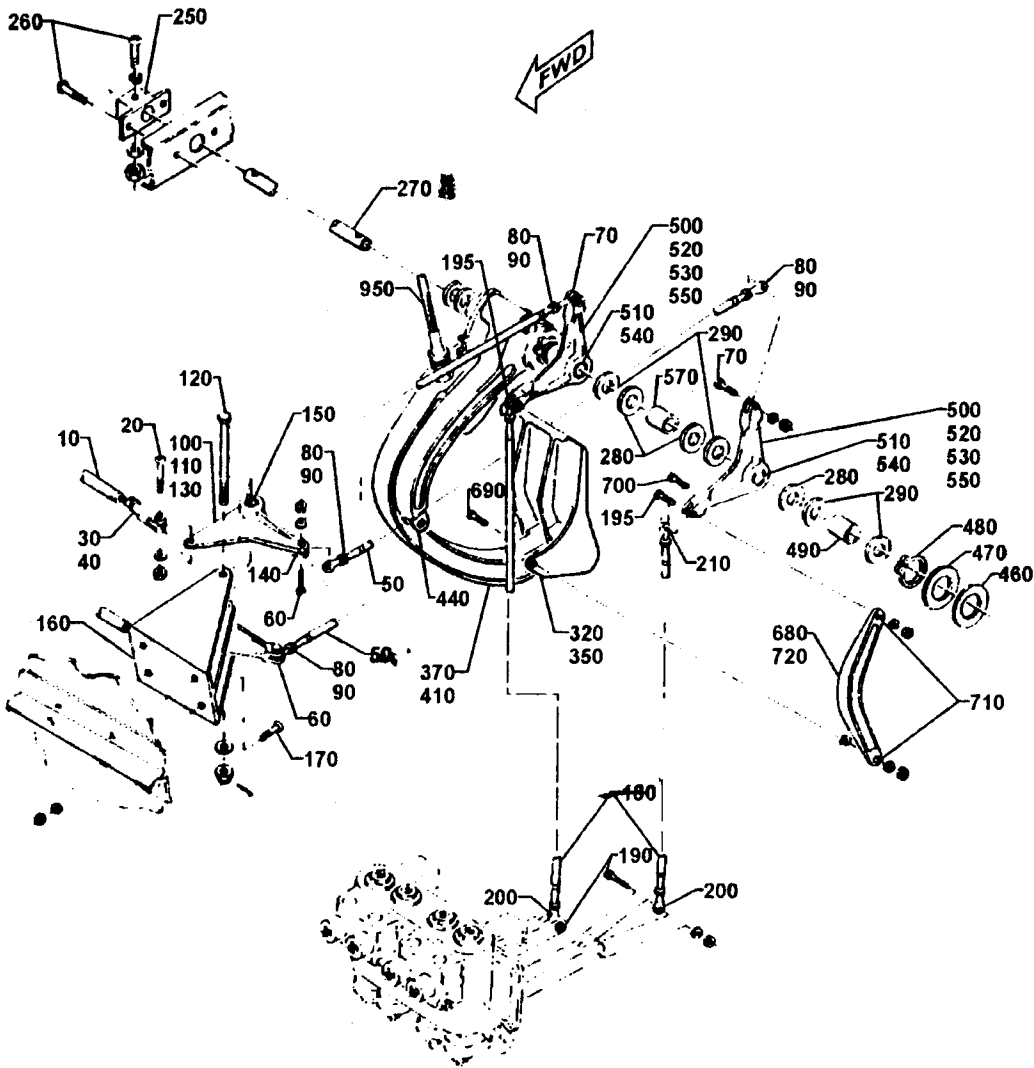
NOTE: (1) 10 years or 10,000 hours, whichever occurs first, and each 5 years or 5000 hours, whichever occurs first, thereafter - perform visual inspection in accordance with Non-Destructive Testing Manual.

(2) For rod assemblies with greater than 9 years or greater than 9000 hours on March 1, 1996, inspection is due 1 year or 1000 hours, whichever occurs first, from March 1, 1996.

EFFECTIVITY: ALL

5-10-00

Page 204
Jan 31/2006



DETAIL A
S/N's 187 thru 287

Rudder Control Installation – Cockpit
 Figure 2
 (Sheet 2)

EFFECTIVITY: ALL

27-20-00

Fig. 2
 Page 1
 Aug 30/2003


AN24-A-WESTWIND / ILLUSTRATED
ISRAEL AIRCRAFT INDUSTRIES LTD / PARTS CATALOG

| FIGURE & ITEM NO. | PART NUMBER | NOMENCLATURE | AIRCRAFT EFFECTIVITY CODE | UNITS PER ASSY |
|-------------------|------------------|---|---------------------------|----------------|
| | | 1234567 | | |
| 2- 1 | 533083 | PEDAL INSTL, RUDDER AND BRAKE (RUDDER CONTROL INSTL, COCKPIT) (REF. 27-20-00 FOR NHA) | | RF |
| 10 | 3900009-25-25.38 | .ROD ASSY | | 2 |
| | | ATTACHING PARTS | | |
| 20 | AN24-13 | .BOLT | AM | 2 |
| | 533083-39 | .BOLT | AN | 2 |
| | AN960-416L | .WASHER | | 2 |
| | MS17826-4 | .NUT | | 2 |
| | MS24665-134 | .COTTER PIN | | 2 |
| | | * * * | | |
| 30 | MS27975-1 | .CLEVIS END | | 2 |
| 40 | AN316-4R | .NUT | | 2 |
| 50 | 3900009-23-8.38 | .ROD ASSY | | 4 |
| | | ATTACHING PARTS | | |
| 60 | MS27039-4-19 | .SCREW | | 1 |
| | AN960-416L | .WASHER | | 2 |
| | MS21042L4 | .NUT | | 1 |
| 70 | MS27039-4-21 | .SCREW | | 1 |
| | AN960-416L | .WASHER | | 1 |
| | MS21042L4 | .NUT | | 1 |
| | | * * * | | |
| 80 | BRE4075 | .ROD END (V81376) | | 2 |
| | FJG60-1640 | .ROD END (ALT) (VD3279) | | 2 |
| | F44-14MT | .ROD END (ALT) (V73134) | | 2 |
| | FXJ44-14B | .ROD END (ALT) (V73134) (WITH "M" STAMPED ON SHANK) | | 2 |

- ITEM NOT ILLUSTRATED

EFFECTIVITY: ALL

27-20-00

Fig. 2
Page 8
Aug 30/2003



24 WESTWIND / ILLUSTRATED

 ISRAEL AIRCRAFT INDUSTRIES LTD / **PARTS CATALOG**

| FIGURE & ITEM NO. | PART NUMBER | NOMENCLATURE | AIRCRAFT EFFECTIVITY CODE | UNITS PER ASSY |
|-------------------|------------------|-------------------------------------|---------------------------|----------------|
| | | 1234567 | | |
| | REF4-8 | .ROD END (ALT) | | 2 |
| | | ATTACHING PARTS | | |
| 90 | AN316-4R | .NUT | | 2 |
| | | *** | | |
| 100 | 543002-1 | .BELLCRANK ASSY | Y | 4 |
| | 543002-1 | .BELLCRANK ASSY | Z | 2 |
| 110 | 543002-501 | .BELLCRANK ASSY | Z | 2 |
| | | ATTACHING PARTS | | |
| 120 | AN24-50 | .BOLT | | 2 |
| | AN960D-416 | .WASHER | | 2 |
| | MS17826-4 | .NUT | | 2 |
| | MS24665-134 | .COTTER PIN | | 1 |
| | | *** | | |
| 130 | 543002-5 | .BELLCRANK (USE WITH 543002-1) | | 1 |
| | 543002-9 | .BELLCRANK (USE WITH 543002-501) | | 1 |
| 140 | S0302-25A | .BEARING | | 1 |
| 150 | S0302-28A | .BEARING | | 1 |
| 160 | 543001-503 | .BRACKET | | 2 |
| | | ATTACHING PARTS | | |
| 170 | AN509-416R13 | .SCREW | | 4 |
| | AN960-416L | .WASHER | | 4 |
| 170 | MS21042L4 | .NUT | | 4 |
| | | *** | | |
| | 3900009-23-13.18 | .ROD ASSY | | 2 |
| 190 | MS27039-1-17 | .SCREW | | 1 |

- ITEM NOT ILLUSTRATED

EFFECTIVITY: ALL

27-20-00

Fig. 2
Page 9
Aug 30/2003



24 WESTWIND / ILLUSTRATED

 ISRAEL AIRCRAFT INDUSTRIES LTD / PARTS CATALOG

| FIGURE & ITEM NO. | PART NUMBER | NOMENCLATURE | AIRCRAFT EFFECTIVITY CODE | UNITS PER ASSY |
|-------------------|----------------------|------------------|---------------------------|----------------|
| | | 1234567 | | |
| | MS27039-4-34 | ..SCREW | | 1 |
| | AN960-416D | ..WASHER | | 3 |
| | MS21042L4 | ..NUT | | 3 |
| | | *** | | |
| 250 | 533120-501 | ..SUPPORT | | 1 |
| | | ATTACHING PARTS | | |
| 260 | MS27039-4-11 | ..SCREW | | 2 |
| | MS27039-4-24 | ..SCREW | | 2 |
| | AN960-416D | ..WASHER | | 3 |
| | MS21042L4 | ..NUT | | 3 |
| | | *** | | |
| 1220 | 533114-501 | ..SHAFT | | 1 |
| 280 | AN960-1216L | ..WASHER | | 8 |
| 290 | 1900099-016-75-1 .30 | ..WASHER | | 8 |
| 300 | NAS43DD12-276 | ..SPACER | | 1 |
| 310 | 533002-503 | ..PEDAL ASSY, LH | | 1 |
| 320 | 533002-504 | ..PEDAL ASSY, RH | | 1 |
| | | ATTACHING PARTS | | |
| 330 | AN4-26A | ..BOLT | | 1 |
| | AN960-416L | ..WASHER | | 1 |
| | MS21042L4 | ..NUT | | 1 |
| | | *** | | |
| 340 | 533002-7 | ...BEARING | | 2 |
| 350 | 533002-11 | ...PEDAL, LH | | 1 |
| | 533002-12 | ...PEDAL, RH | | 1 |
| 360 | NAS77-4-33 | ..BUSHING | | 4 |

- ITEM NOT ILLUSTRATED

EFFECTIVITY: ALL

27-20-00

Fig. 2
Page 11
Aug 30/2003

Nose Door Rods



**1124 A-WETWIND / MAINTENANCE
ISRAEL AIRCRAFT INDUSTRIES LTD / MANUAL**

| <u>SYSTEM AND COMPONENT</u> | <u>PART NUMBER</u> | <u>OVERHAUL OR REPLACE</u> | <u>REPLACE</u> |
|-----------------------------|--------------------|------------------------------------|----------------|
|-----------------------------|--------------------|------------------------------------|----------------|

NOTE: (1) Time count for inspection or testing shall commence from the date the bottle was placed in service.

(2) Visual inspection of gas storage cylinder shall include both internal and external visual inspection.

| | | | |
|---|------------------|------------------------|-----------------------------------|
| (2) Bolts, Main Wheel Halves (Wheel Assembly P/N 5002806-1) | GY186-36 | | 400 Landings or third tire change |
| (3) Rod Assembly (2 ea.) (NLG doors) | 3900009-23-12.88 | X-Ray Insp. (See Note) | |
| (4) Rod Assembly (2 ea.) (NLG doors) | 3900009-23-12.43 | X-Ray Insp. (See Note) | |
| (5) Shaft Assembly (2 ea.) (NLG doors) | 283023-501 | X-Ray Insp. (See Note) | |

NOTE: (1) 10 years or 10,000 hours, whichever occurs first, and each 5 years or 5,000 hours, whichever occurs first, thereafter - perform X-Ray inspection in accordance with Non-Destructive Testing Manual.

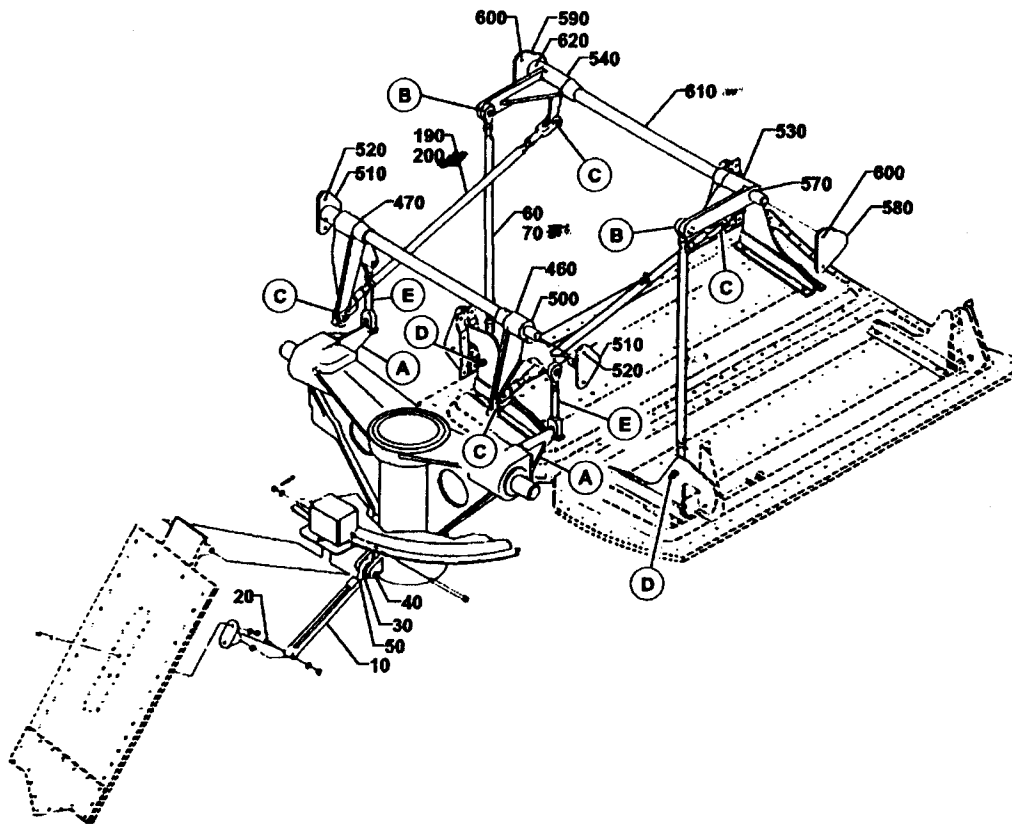
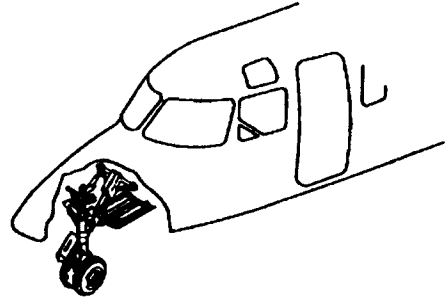
(2) For rod assemblies with greater than 9 years or greater than 9,000 hours on March 1, 1996, inspection is due 1 year or 1,000 hours, whichever occurs first, from March 1, 1996.

| | | | |
|--------------------------------------|--|--|-------|
| (6) Steering Bracket Assembly, Upper | ES12970-7 or 2236.0200.000 | 800 - Inspect. Ref. 32-50-08, Inspection / Check | 3,200 |
| (7) Steering Bracket Assembly, Lower | ES12970-6 or 2236.0300.000 | 800 - Inspect. Ref. 32-50-08, Inspection / Check | 3,200 |
| (8) Steering Bracket Assembly, Upper | A01 ES 12970-7 or 2236.0200.000 (See following Note) | 1600 hr - Inspect. Ref. 32-50-08, Inspection / Check | |

EFFECTIVITY: ALL

5-10-00

Page 206
Jan 31/2006



Nose Gear Door Mechanism Installation
 Figure 5
 (Sheet 1)

EFFECTIVITY: ALL

32-20-00

Fig. 5
 Page 0
 Aug 30/2003

| FIGURE & ITEM NO. | PART NUMBER | NOMENCLATURE | AIRCRAFT EFFECTIVITY CODE | UNITS PER ASSY |
|-------------------|------------------|--|---------------------------|----------------|
| | | 1234567 | | |
| 5- 1 | 283002 | DOOR MECHANISM INSTL, NLG (REF. 32-20-00 FOR NHA) | | RF |
| 10 | 283016-501 | .LINK | | 1 |
| | | ATTACHING PARTS | | |
| 20 | AN4-10A | .BOLT | | 1 |
| | AN960-416L | .WASHER | | 1 |
| | MS20365-428 | .NUT | | 1 |
| | | * * * | | |
| 30 | BRE4100L | .ROD END (V81376) | | 1 |
| | BACB10A278L | .ROD END (ALT) | | 1 |
| | FMS3E4 | .ROD END (ALT) (VT0128) | | 1 |
| | | ATTACHING PARTS | | |
| 40 | AN4-11A | .BOLT | | 1 |
| 41 | AN960-416L | .WASHER | | 1 |
| 42 | MS20365-428 | .NUT | | 1 |
| 43 | | * * * | | |
| 50 | AN316-5R | .NUT | | 1 |
| 60 | 283002-401 | .CONTROL ROD ASSY | | 2 |
| 70 70 | 3900009-23-12.88 | .. ROD ASSY | | 1 |
| 80 | BRE4075 | ..ROD END (V81376) | | 2 |
| | F44-14MT | ..ROD END (ALT) (V73134) | | 2 |
| | FJG60-1640 | ..ROD END (ALT) (VD3279) | | 2 |
| | FXJ44-14B | ..ROD END (ALT) (V73134) (WITH 'M' ON SHANK) | | 2 |
| | | ATTACHING PARTS | | |
| 90 | MS20470AD3 | ..RIVET (LENGTH TBD AT ASSY) | | 2 |
| 100 | AN316-4R | ..NUT | | 2 |

- ITEM NOT ILLUSTRATED

EFFECTIVITY: ALL

32-20-00

Fig. 5
Page 2
Aug 30/2003

| FIGURE & ITEM NO. | PART NUMBER | NOMENCLATURE | AIRCRAFT EFFECTIVITY CODE | UNITS PER ASSY |
|--------------------|------------------|------------------------------------|---------------------------|----------------|
| | | 1234567 | | |
| 110 | AN4-12A | ..BOLT (SUPERSEDED BY ITEM 120) | | 1 |
| - 120 | NAS6204-14 | ..BOLT (SUPERSEDES ITEM 110) | | 1 |
| 130 | AN960-416 | ..WASHER | | 2 |
| 140 | AN960-416L | ..WASHER | | 1 |
| 150 | MS20365-428 | ..NUT | | 1 |
| 160 | AN24-14 | .. BOLT | | 1 |
| 170 | AN960-416 | ..WASHER | | 1 |
| 180 | MS20364-428 | ..NUT | | 1 |
| | | * * * | | |
| 190 | 283002-403 | ..CONTROL ROD ASSY | | 2 |
| 200 200 | 3900009-23-12.43 | .. ROD ASSY | | 1 |
| 210 | MS27975-3 | .. ROD END | | 2 |
| | | ATTACHING PARTS | | |
| 220 | MS20470AD3 | ..RIVET (LENGTH TBD AT ASSY) | | 2 |
| 230 | AN316-4R | ..NUT | | 2 |
| 240 | AN23-14 | .. BOLT | | 2 |
| 250 | AN960-10 | ..WASHER | | 4 |
| 260 | AN310-3 | ..NUT | | 2 |
| 270 | AN380-2-3 | ..COTTER PIN | | 2 |
| | | * * * | | |
| 280 | 283013-501 | ..BELLCRANK, NOSE DOOR, LH | | 1 |
| 290 | 283013-502 | ..BELLCRANK, NOSE DOOR, RH | | 1 |
| | | ATTACHING PARTS | | |
| 300 | AN4H6 | ..BOLT | | 2 |


- ITEM NOT ILLUSTRATED

EFFECTIVITY: ALL

32-20-00

Fig. 5
Page 3
Aug 30/2003


0024
0024A - WESTWIND / **ILLUSTRATED**
ISRAEL AIRCRAFT INDUSTRIES LTD / **PARTS CATALOG**

| FIGURE & ITEM NO. | PART NUMBER | NOMENCLATURE | AIRCRAFT EFFECTIVITY CODE | UNITS PER ASSY |
|---|-------------|--------------|---------------------------|----------------|
| | | 1234567 | | |
|  610 | 283023-501 | .SHAFT ASSY | | 2 |
| 620 | MS1 6562-38 | .PIN | | 4 |

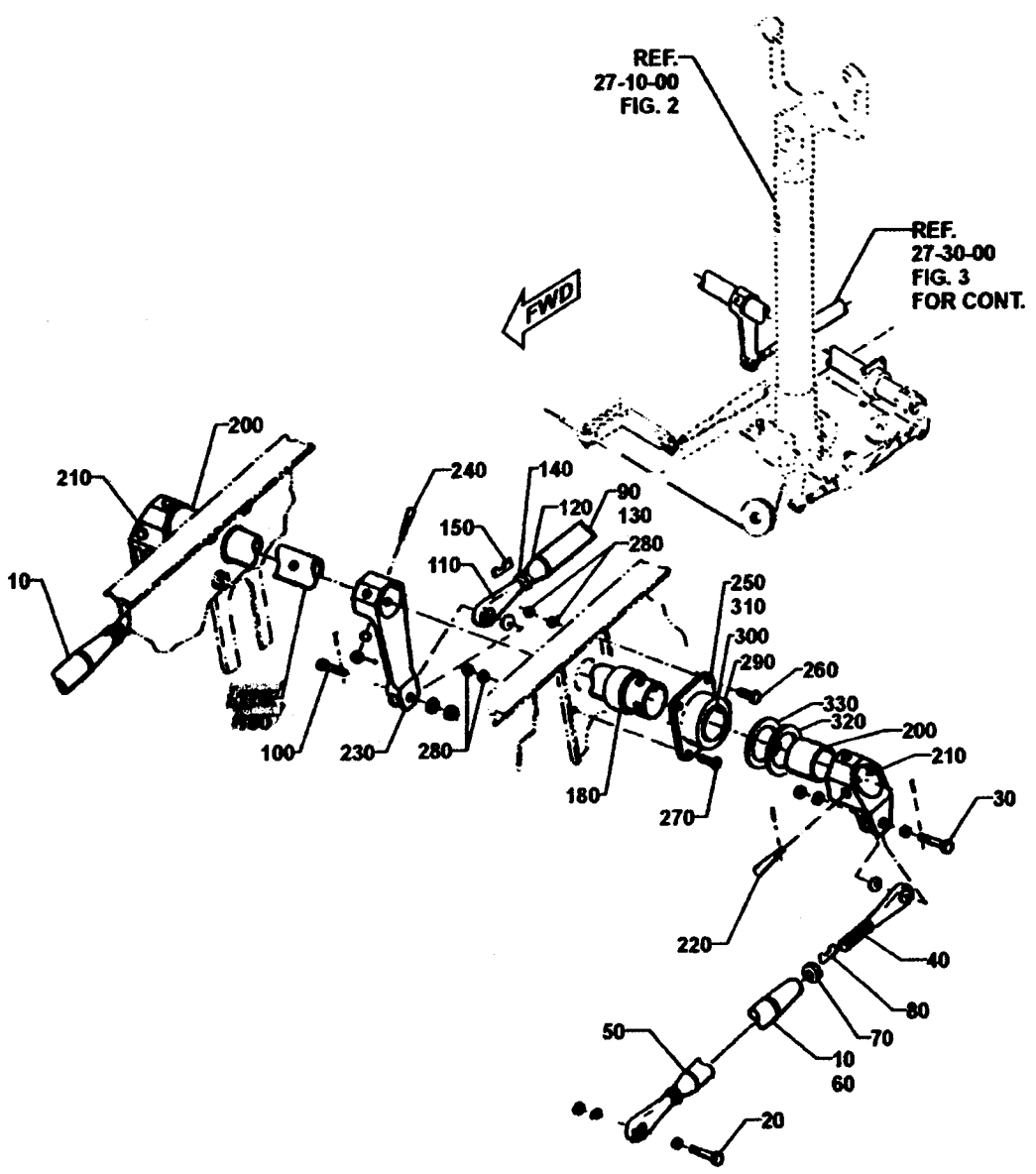
- ITEM NOT ILLUSTRATED

| |
|------------------|
| EFFECTIVITY: ALL |
|------------------|

32-20-00

Fig. 5
Page 6
Aug 30/2003

Elevator Control



Elevator Control Installation – Cockpit
 Figure 2

EFFECTIVITY: ALL



024 WESTWIND / ILLUSTRATED PARTS CATALOG
 ISRAEL AIRCRAFT INDUSTRIES LTD

| FIGURE & ITEM NO. | PART NUMBER | NOMENCLATURE | AIRCRAFT EFFECTIVITY CODE | UNITS PER ASSY |
|-------------------|-------------|--|---------------------------|----------------|
| | | 1234567 | | |
| 80 | NAS559-2 | . LOCK, ROD END * * * | | 2 |
| 90 | 503509-501 | . TUBE ASSY ATTACHING PARTS | | 2 |
| 100 | NAS464P4-14 | . BOLT | | 2 |
| | NAS6204-14D | . BOLT (ALT) | | 2 |
| | AN960PD416L | . WASHER (1 BETWEEN ROD END & ARM, & 1 UNDER NUT) | | 4 |
| | MS17826-4 | . NUT | | 2 |
| | NS24865-134 | . COTTER PIN | | 2 |
| | NAS75-4-008 | . BUSHING * * * | | 2 |
| 110 | ST4BW | . . ROD END | (V02909) | 2 |
| | SM4-6M5 | . . ROD END (ALT) | (V02909) | 2 |
| | 60-1832 | . . ROD END | | 2 |
| 120 | 503516-501 | . . FITTING | | 2 |
| 130 | 503509-5 | . . TUBE | | 1 |
| 140 | NAS509-6 | . . NUT | | 2 |
| 150 | NAS559-2 | . . LOCK, ROD END * * * | | 2 |
| -160 | 533012 | . TORQUE TUBE INSTL | | RF |
| | 533012-13RE | . . TUBE ASSY | | 1 |
| 180 | 1R2416 | . . BEARING | (V60380) | 2 |
| 190 | 533012-13 | . . TUBE | | 1 |
| 200 | 533012-15 | . . SLEEVE | | 2 |
| 210 | 533014-501 | . . ARM | | 2 |

- ITEM NOT ILLUSTRATED

EFFECTIVITY: ALL

27-30-00

Fig. 2
Page 2
Aug 30/2003